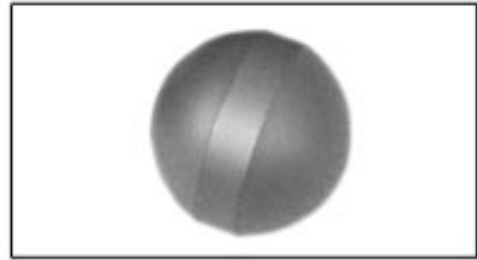
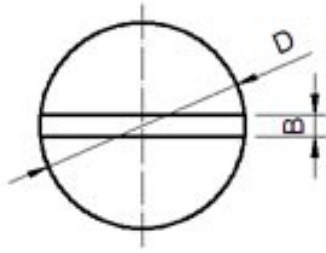




Cemented Carbide balls



Unit: mm

Type	D	B
CTC-Nball	Φ3~Φ200	0~5

Fine grinding ball level:

grade	size range	deviation from spherical form	lot diameter variation	allowable ball gage variation	nominal ball diameter tolerance	marking increments	maximum surface in Micro-inches "Ra"
3	0.006-1/2	0.000003	±0.00000	±0.00003	-	0.000010	0.5
5	0.006-1/2	0.000005	±0.00000	±0.00005	-	0.000010	0.8
10	0.006-7/8	0.000010	±0.000010	±0.00005	-	0.000010	1.0
25	0.006-1	0.000025	±0.000025	±0.00010	-	0.000010	2.0
50	0.006-1	0.000050	±0.000050	-	±0.0002	0.000050	3.0
100	0.006-1	0.000100	±0.000100	-	±0.0005	-	5.0
200	0.006-1	0.000200	±0.000200	-	±0.0010	-	8.0
1000	0.006-1	0.001000	±0.001000	-	±0.0050	-	-