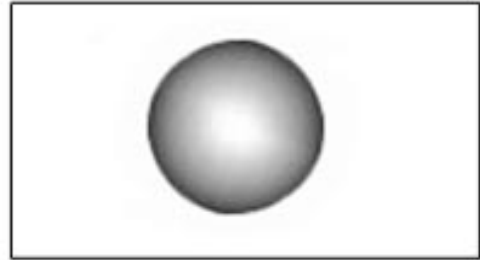
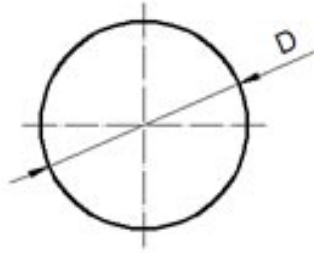




### Cemented Carbide balls



Unit: mm

Type	diameter
CTC-Tball	Φ2-Φ60

#### Mechanical properties:

Tensile strength 220,000 PSI/ ft  
 Ultimate strength 643,000 PSI/ft  
 Flexural strength 228,000 PSI/ft  
 Elastic coefficient 98,000,000  
 Density (approximately) 0.54 lbs/inch  
 Specific gravity 14.85-15.5  
 Conductive slightly magnetic  
 Low thermal expansion rate  
 Structure: A02 B00 C00 (isostatic process)

#### Grade and feature

Grade	Density	Hardness	Trs Mpa	Iso code
YG6	15	91	2100	K20
YG6X	15	92	2000	K10
YG8	14.7	90.5	2100	K30
TK20U	14.8	92.5	2700	K20

#### American Standard A.F.B.M.A.

Level	Spherical deviation	The maximum surface roughness	Diameter deviation (+/-)
3	0.000003	0.5	0.000030
5	0.000005	0.8	0.000050
10	0.000010	1.0	0.000100
16	0.000016	1.0	0.000100
24	0.000024	2.0	0.000100
25	0.000025	2.0	0.000100
48	0.000048	3.0	0.000200
50	0.000050	3.0	0.000200
100	0.000100	5.0	0.000500
200	0.000200	8.0	0.001000
500	0.000500		0.002000
1000	0.001000		0.005000