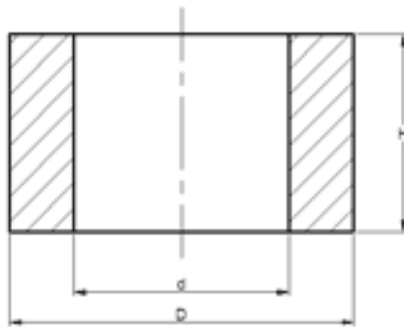




Cemented Carbide Gauge Block-Type LH



Unit: mm

| Type | d | D | H |
|----------------|------|------|------|
| CTC-SLH0300705 | 3.0 | 7.0 | 5.0 |
| CTC-SLH0350705 | 3.5 | | |
| CTC-SLH0400905 | 4.0 | 9.0 | |
| CTC-SLH0450905 | 4.5 | | |
| CTC-SLH0401005 | 4.0 | 10.0 | |
| CTC-SLH0451005 | 4.5 | | |
| CTC-SLH0501005 | 5.0 | | |
| CTC-SLH0551006 | 5.5 | 12.0 | 6.0 |
| CTC-SLH0601206 | 6.0 | | |
| CTC-SLH0651206 | 6.5 | | |
| CTC-SLH0701206 | 7.0 | | |
| CTC-SLH0751206 | 7.5 | | |
| CTC-SLH0801206 | 8.0 | | |
| CTC-SLH0851206 | 8.5 | 16.0 | |
| CTC-SLH0901606 | 9.0 | | |
| CTC-SLH0951606 | 9.5 | | |
| CTC-SLH1001608 | 10.0 | 20.0 | 8.0 |
| CTC-SLH1102008 | 11.0 | | |
| CTC-SLH1202008 | 12.0 | | |
| CTC-SLH1302008 | 13.0 | | |
| CTC-SLH1402208 | 14.0 | | |
| CTC-SLH1502208 | 15.0 | | |
| CTC-SLH1602208 | 16.0 | 22.0 | |
| CTC-SLH1702710 | 17.0 | | |
| CTC-SLH1802710 | 18.0 | | |
| CTC-SLH1902710 | 19.0 | 27.0 | |
| CTC-SLH2002710 | 20.0 | | |
| CTC-SLH2103210 | 21.0 | | |
| CTC-SLH2203210 | 22.0 | 32.0 | 10.0 |
| CTC-SLH2303210 | 23.0 | | |
| CTC-SLH2403210 | 24.0 | | |



Continued

Unit: mm

| Type | d | D | H |
|----------------|------|------|------|
| CTC-SLH2503710 | 25.0 | 37.0 | 10.0 |
| CTC-SLH2603710 | 26.0 | | |
| CTC-SLH2703710 | 27.0 | | |
| CTC-SLH2803710 | 28.0 | | |
| CTC-SLH2903710 | 29.0 | | |
| CTC-SLH3004514 | 30.0 | 45.0 | 14.0 |
| CTC-SLH3104514 | 31.0 | | |
| CTC-SLH3205014 | 32.0 | 50.0 | |
| CTC-SLH3305014 | 33.0 | | |
| CTC-SLH3405514 | 34.0 | 55.0 | |
| CTC-SLH3505514 | 35.0 | | |
| CTC-SLH3706014 | 37.0 | 60.0 | |
| CTC-SLH3906014 | 39.0 | | |

Tolerance: d: -0.90~0; D、H: ± 0.50