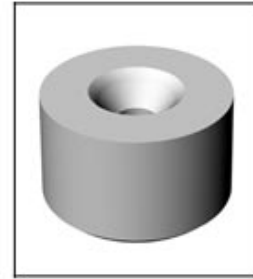
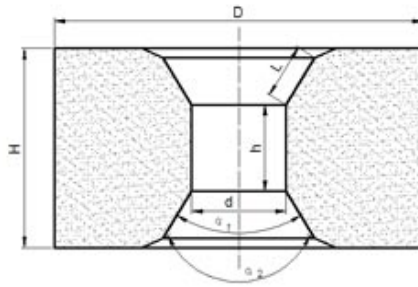




Cemented Carbide High Pressure Cylinder Blank



Unit: mm

Type	D	d	H	h	L	$\alpha 1^\circ$	$\alpha 2^\circ$
CTC-SDG245	181.0	44.0	108.3	42.0	30	60	90
CTC-SDG250	171.5	49.0	111.5	54.0	24.5	59	90
CTC-SDG258	197.0	57.0	112.0	55.0	29.3	59	140
CTC-SDG268	239.5	67.0	127.0	57.0	33.3	58	144

Tolerance: D: -0.5~+3.5; d: -2.0~0; H: 0~+2.5; h: 0~+1.7; L: 0~+1.5; $\alpha 1$: -1.5~0;

$\alpha 2$: -1.5~0