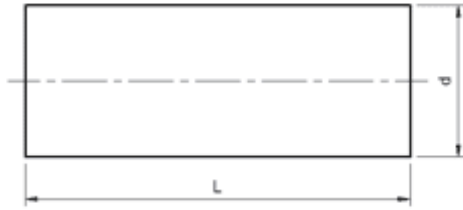




Cemented Carbide Rotary Teeth-Type A



Unit: mm

Type	d	L
CTC-SA0616	6.5	16.5
CTC-SA0820	8.5	20.5
CTC-SA1020	10.5	20.5
CTC-SA1225	12.5	25.5
CTC-SA1625	16.5	25.5

Tolerance: d: 0~+0.4; L: ±0.3