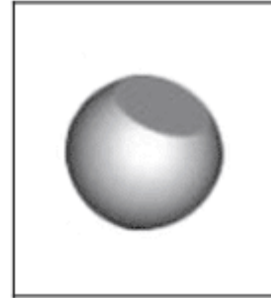
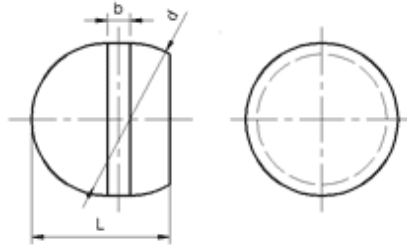




Cemented Carbide Rotary Teeth-Type D



Unit: mm

Type	d	L	b
CTC-SD0605	6.5	5.9	≤3mm
CTC-SD0807	8.5	7.6	
CTC-SD1009	10.5	9.4	
CTC-SD1211	12.5	11.2	
CTC-SD1614	16.5	14.8	

Tolerance: d: 0~+0.5; L: 0~+0.4