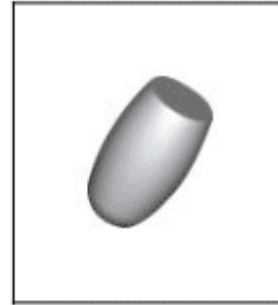
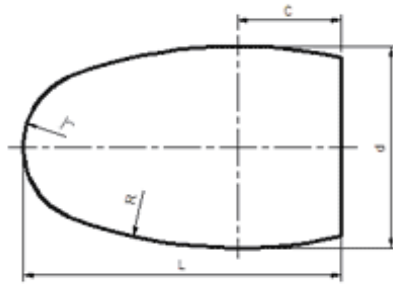




Cemented Carbide Rotary Teeth-Type E



Unit: mm

Type	d	L	r	R	C
CTC-NE0813	8.5	13.5	3.7	40	3.5
CTC-NE1016	10.5	16.5	4.0	22	5.9
CTC-NE1220	12.5	20.5	5.0	55	4.4
CTC-NE1625	16.5	25.5	6.5	37	8.8

Tolerance: d: +0.2~+0.6; L: ±0.3