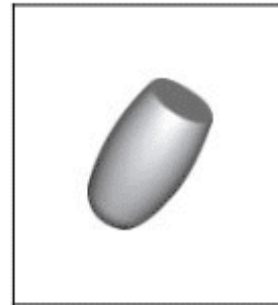
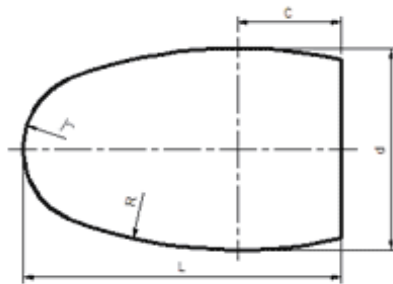




Cemented Carbide Rotary Teeth-Type E



Unit: mm

Type	d	L	r	R	C
CTC-SE0813	8.5	13.5	3.7	40	3.5
CTC-SE1016	10.5	16.5	4.0	25	5.4
CTC-SE1220	12.5	20.5	5.0	55	4.4
CTC-SE1625	16.5	25.5	6.5	40	8.3

Tolerance: d: 0~+0.5; L: ±0.3