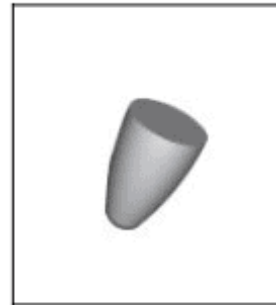
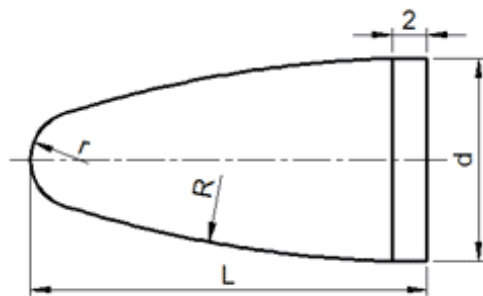




Cemented Carbide Rotary Teeth-Type F



Unit: mm

Type	d	L	r	R
CTC-NF0618	6.5	18.5	1.5	52
CTC-NF1020	10.5	20.5	2.5	62
CTC-NF1225	12.5	25.5	3.0	82

Tolerance: d: +0.2~+0.6; L: ±0.3