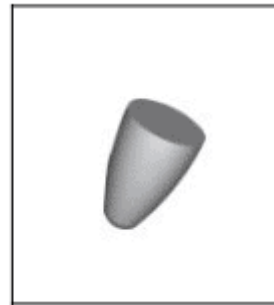
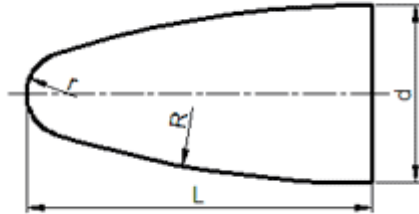




Cemented Carbide Rotary Teeth-Type F



Unit: mm

Type	d	L	r	R
CTC-SF0618	6.5	18.5	2.0	52
CTC-SF1020	10.5	20.5	2.5	62
CTC-SF1225	12.5	25.5	3.0	82

Tolerance: d: 0~+0.5; L: ± 0.3