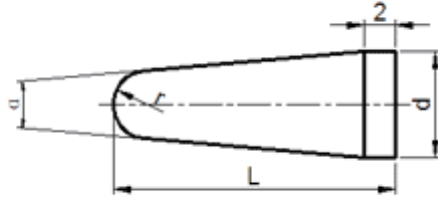




Cemented Carbide Rotary Teeth-Type L



Unit: mm

Type	d	L	r	α°
CTC-NL0413	4.2	13	1.05	10
CTC-NL0513	5.2	13	1.5	6.4
CTC-NL0613	6.2	13	1.5	12.5
CTC-NL0616	6.5	16.5	1.5	14
CTC-NL0822	8.5	22.5	1.7	
CTC-NL1020	10.5	20.5	2.0	
CTC-NL1025	10.5	25.5	2.4	
CTC-NL1228	12.5	28.5	3.2	
CTC-NL1328	13.2	28.5	3.1	
CTC-NL1428	14.5	28.5	3.0	
CTC-NL1633	16.5	33.5	4.7	

Tolerance: d: +0.4~+0.6; L: 0.3~0.5