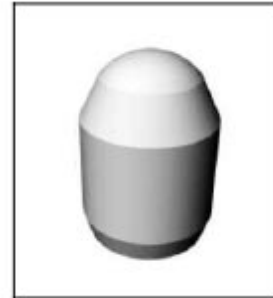
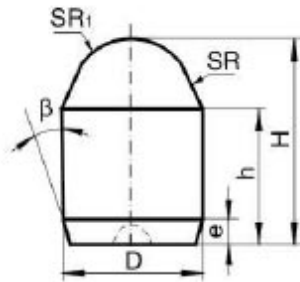


Cemented Carbide Spherical Conical Button-Type CZ-1



Unit: mm

| Type | D | H | h | R | R1 | β° | e |
|---------------|------|------|------|------|-----|---------------|-----|
| CTC-GCZ0812-1 | 8.0 | 12.0 | 7.5 | 10.4 | 3.5 | 18 | 1.2 |
| CTC-GCZ1016-1 | 10.0 | 16.0 | 11.0 | 11.5 | 4.0 | 18 | 1.2 |
| CTC-GCZ1422-1 | 14.0 | 22.5 | 14.5 | 22.0 | 5.0 | 18 | 1.5 |
| CTC-GCZ1621-1 | 16.0 | 21.0 | 13.0 | 16.0 | 5.0 | 18 | 1.5 |
| CTC-GCZ1622-1 | 16.0 | 22.0 | 12.0 | 16.0 | 5.0 | 18 | 1.5 |
| CTC-GCZ1825-1 | 18.0 | 25.0 | 15.0 | 28.0 | 6.5 | 18 | 1.8 |
| CTC-GCZ-96504 | 22.0 | 35.0 | 23.0 | 26.0 | 3.0 | 45 | 3.0 |

Tolerance: D: +0.05; H: ± 0.30