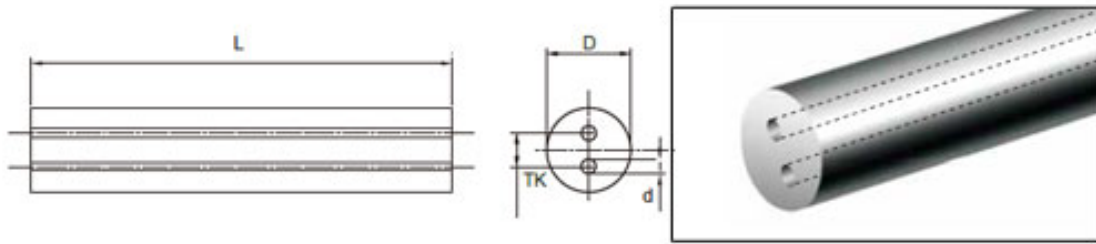




Cemented Carbide Rods with Two Straight Coolant Holes



Unit: mm

Type	D	TK	d	L
CTC-CΦ3.3×2Φ0.5×1.5×330	3.3	1.5	0.5	330
CTC-CΦ4.3×2Φ0.6×2.0×330	4.3	2.0	0.6	330
CTC-CΦ5.3×2Φ0.8×2.6×330	5.3	2.6	0.8	330
CTC-CΦ6.3×2Φ0.9×3.0×330	6.3	3.0	0.9	330
CTC-CΦ7.3×2Φ1.0×3.2×330	7.3	3.2	1.0	330
CTC-CΦ8.3×2Φ1.2×3.5×330	8.3	3.5	1.2	330
CTC-CΦ9.3×2Φ1.4×3.7×330	9.3	3.7	1.4	330
CTC-CΦ10.3×2Φ1.6×4.3×330	10.3	4.3	1.6	330
CTC-CΦ11.3×2Φ1.8×4.8×330	11.3	4.8	1.8	330
CTC-CΦ12.3×2Φ1.8×5.0×330	12.3	5.0	1.8	330
CTC-CΦ13.3×2Φ1.8×5.5×330	13.3	5.5	1.8	330
CTC-CΦ14.3×2Φ1.8×5.5×330	14.3	5.5	1.8	330
CTC-CΦ15.3×2Φ1.8×5.5×330	15.3	5.5	1.8	330
CTC-CΦ16.3×2Φ1.8×5.5×330	16.3	5.5	1.8	330
CTC-CΦ17.3×2Φ2.0×6.0×330	17.3	6.0	2.0	330
CTC-CΦ18.3×2Φ2.0×6.0×330	18.3	6.0	2.0	330
CTC-CΦ19.3×2Φ2.0×6.0×330	19.3	6.0	2.0	330
CTC-CΦ20.3×2Φ2.0×6.0×330	20.3	6.0	2.0	330

Tolerance: D: +0.3~+0.5; TK: 0.15~0.5; d: 0.1~0.3; L: +1.5