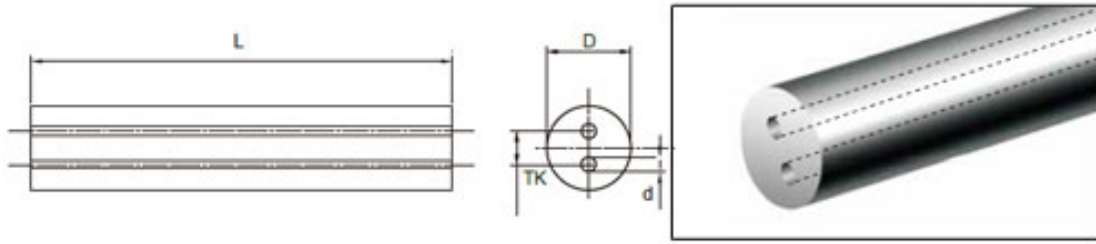




### Cemented Carbide Rods with Two Straight Coolant Holes



Unit: mm

Type	D	TK	d	L
CTC-JΦ4.4x2Φ0.6x1.8x330	4.4	1.8	0.60	330
CTC-JΦ5.4x2Φ0.8x2x330	5.4	2.0	0.80	330
CTC-JΦ6.5x2Φ1x3x330	6.5	3.0	1.00	330
CTC-JΦ7.5x2Φ1x3.5x330	7.5	3.5	1.00	330
CTC-JΦ8.5x2Φ1x4x330	8.5	4.0	1.00	330
CTC-JΦ9.5x2Φ1.4x4x330	9.5	4.0	1.40	330
CTC-JΦ10.5x2Φ1.4x5x330	10.5	5.0	1.40	330
CTC-JΦ11.5x2Φ1.4x5x330	11.5	5.0	1.40	330
CTC-JΦ12.5x2Φ1.75x6x330	12.5	6.0	1.75	330
CTC-JΦ13.5x2Φ1.75x6x330	13.5	6.0	1.75	330
CTC-JΦ14.5x2Φ1.75x7x330	14.5	7.0	1.75	330
CTC-JΦ15.5x2Φ2x7x330	15.5	7.0	2.00	330
CTC-JΦ16.5x2Φ2x8x330	16.5	8.0	2.00	330
CTC-JΦ17.6x2Φ2x8x330	17.6	8.0	2.00	330
CTC-JΦ18.6x2Φ2x9x330	18.6	9.0	2.00	330
CTC-JΦ19.6x2Φ2x9x330	19.6	9.0	2.00	330
CTC-JΦ20.6x2Φ2.5x10x330	20.6	10.0	2.50	330

Tolerance: D:  $\pm 0.25$ ; TK:  $\pm 0.40$ ; d:  $\pm 0.25$ ; L: 0~+5.0