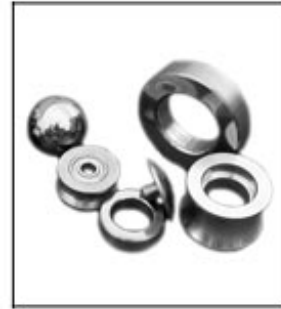
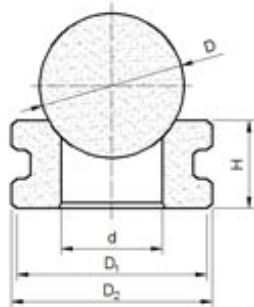




Cemented Carbide Valve Ball and Seat



Unit: mm

Type	D	H	D1	D2	d
CTC-NΦ15.88×12.7×20.14	15.88	12.7	19.48	20.14	11.68
CTC-NΦ19.05×12.7×23.32	19.05	12.7	22.66	23.32	13.97
CTC-NΦ23.83×12.7×29.67	23.83	12.7	28.22	29.67	17.02
CTC-NΦ28.58×12.7×35.26	28.58	12.7	33.81	35.26	20.96
CTC-NΦ31.75×12.7×35.26	31.75	12.7	33.81	35.26	20.96
CTC-NΦ34.93×12.7×43.69	34.93	12.7	41.43	43.69	26.92
CTC-NΦ42.88×12.7×51.05	42.88	12.7	48.79	51.05	33.27
CTC-NΦ57.15×19.05×78.03	57.15	19.05	74.93	78.03	43.18

Tolerance: H: -0.25~+0.51; D1: -0.41~+0; D2: -0.127~+0; d: ±1.27